



SPA  
MENU

*Mahmaison*

A close-up photograph of several overlapping aloe vera leaves, showing their characteristic serrated edges and textured surface. The leaves are a vibrant green color.

## MEDICAL

Please make our spa team aware of any medical conditions or allergies at the time of booking, this includes any recent surgery & pregnancy.

## BOOKING & CANCELLATION

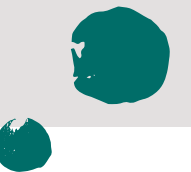
Full payment is required at the time of booking for all treatments. Cancellations need to be received at least 48 hours before day of the booking to reschedule or refund. Failure to do so will incur a 100% cancellation charge.

## TREATMENT TIMES

All treatment time includes pre-treatment consultation & aftercare.

A decorative graphic element consisting of a thin, black, wavy line that starts from the top right and curves downwards. Below it is a thick, white, brushstroke-like shape that tapers to the right.

If you're looking for a quick fix, regular beauty maintenance, luxurious spa treatment or even the perfect place to relax for that special occasion, Malmaison Spa is the place you have been searching for, offering the very best in luxury Spa & Beauty treatments. Pamper yourself with our range of relaxing ESPA face & body Treatments. This is the inner-city escape you've been looking for.



# WAXING

Using only the finest resins, natural ingredients & aromatherapy oils, Lycon delivers superior performance, removing stubborn hair as short as 1mm. The elite Lycon brand offers a choice of waxes complemented by pre & post waxing lotions allowing the right combination to be tailored for your complete satisfaction.

	LYCON STRIP WAX	LYCON HOT WAX <i>(Sensitive, Less Painful)</i>
FULL LEG	£38	-
HALF LEG	£28	-
FULL ARM	£22	-
FOREARM	£16	-
UNDERARM	£16	£18
EYEBROWS	£11	£13
LIP & CHIN	£13	£16
LIP OR CHIN	£9	£11
BIKINI	-	£22
EXTENDED BIKINI	-	£24
BRAZILIAN	-	£34
HOLLYWOOD	-	£40





## HANDS & FEET

Nails have their own DNA, their own specific strengths and weaknesses – just like hair and skin. It is impossible to treat all nails the same and keep them healthy.

### PRESCRIPTIVE MANICURE

60 MINS £32.50

This nail and cuticle tidy includes a hand and arm massage followed by an application of colour polish.

### DELUXE MANICURE WITH THERMAL MITTENS

75 MINS £37.50

Incorporating the Prescriptive Manicure, thermal mittens aid a deeper skin drenching of oils and creams, softening cuticles and improving circulation.

### PEDICURE

60 MINS £37.50

A luxury foot treatment that will leave you with smoother, softer and revitalised feet, finishing with an application of colour polish.

### DELUXE SPA PEDICURE

90 MINS £42.50

Incorporating the Pedicure, thermal booties will drench your feet with moisture and intensify absorption, followed by pressure point massage and lymph drainage.

### FILE & POLISH ON HANDS OR FEET

30 MINS £18

## CND SHELLAC NAILS

Shellac nails delivers a high shine, chip free finish for up to two weeks, and is designed to continue to protect the natural nail – from application to wear and soak-off removal.

### CND SHELLAC APPLICATION

30 MINS £30

### CND SHELLAC MANICURE

60 MINS £42.50

### CND SHELLAC SPA PEDICURE

60 MINS £47.50

### CND SHELLAC SOAK OFF\*

30 MINS £15

### CND SHELLAC SOAK OFF & REFRESH\*

60 MINS £37.50

### FRENCH POLISH TO ANY NAIL TREATMENT £3

\*removal of Shellac only

## BEAUTY ST TROPEZ

This multi award-winning Spray Tan transforms the skin, leaving you with a long-lasting, flawless tan.

ST TROPEZ CLASSIC SPRAY TAN  
20 MINS £25

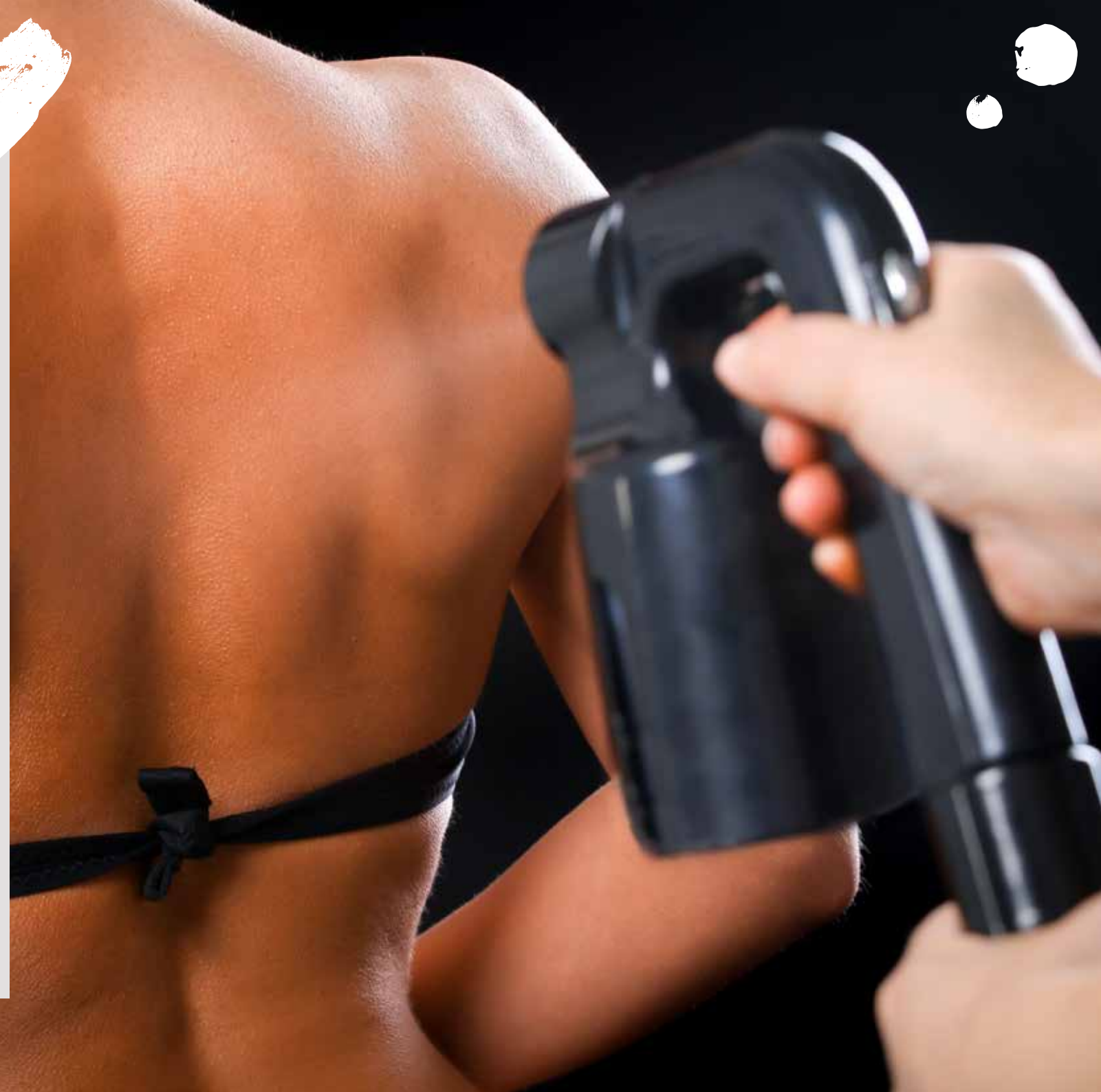
ST TROPEZ DARK TAN  
20 MINS £25

NEW ST TROPEZ EXPRESS TAN  
20 MINS £28

This new Express Tan has a faster developing time between 1-3 hours depending on your desirable shade.

PRE-TAN EXFOLIATION  
15 MINS £15

7 DAY TOP-UP TAN  
15 MINS £15





## BODY TREATMENTS

### TOTAL HOLISTIC BODY CARE 90 MINS £95

This all-encompassing treatment commences with a full body skin brushing and exfoliation to prepare the skin, leaving it feeling soft and smooth. This is then followed by a body, face and scalp massage using a blend of essential oils chosen to suit individual requirements.

### INNER CALM MASSAGE 30/60 MINS £45/£62

Using a blend of individually chosen oils, a personal consultation will ensure you will receive a unique treatment to suit your specific needs.

### BESPOKE DEEP MUSCLE MASSAGE 30/60 MINS £48/£72

Focusing on relieving specific stress and muscle tension through a deep rhythmic pressure massage.

### LIFE SAVING BACK TREATMENT 45 MINS £60

A stress relieving back treatment with deep cleansing, body brushing and exfoliation to help stimulate circulation and cell renewal, followed by a luxurious aromatherapy massage and body mask using individually chosen essential oils combined with marine mud.

### SALT SCRUB 25 MINS £40

This exceptional skin softening body exfoliation combines sea salts with nourishing essential oils to leave your skin moisturised, smooth and soft.

### ORIENTAL SCALP MASSAGE 30 MINS £36

A deeply relaxing treatment for those who hold tension in their shoulders and mind, focusing on acupressure points throughout the shoulders, neck and scalp helping to stimulate lymph.

Please see website for details of pricing and availability.



## ADVANCED BODY TREATMENTS

PRE/POST-NATAL RELAX AND RESTORE  
BACK MASSAGE  
30 MINS £46

PRE/POST-NATAL RELAX AND RESTORE  
FULL BODY MASSAGE  
60 MINS £73

YUMMY MUMMY  
2 HOURS 30 MINS £145

Pre/Post Natal Treatment includes:  
Full Body Exfoliation, Back Massage,  
Oriental Scalp Massage, Prescriptive Manicure  
or Pedicure plus some Malmaison chocolates.

PRE/POST-NATAL RELAX AND RESTORE  
BODY TREATMENT  
90 MINS £95

A deeply nourishing body massage designed to target areas prone to stress & tension during or after pregnancy. Gentle back exfoliation, if required, is followed by a soothing massage specifically designed to suit your individual concerns, focusing on the areas to alleviate muscular aches, whilst helping to relax, restore and revitalise.

*Note: Prenatal guests must be past their first trimester – 3 months*

UNIVERSAL CONTOUR WRAP *(Only available at Malmaison Aberdeen)*  
2 HOURS £75

The classic inch loss treatment that combines the application of a unique natural clay solution with specific wrapping techniques. It is this combination that makes the treatment so effective with a guaranteed overall inch loss of at least 6 inches. A course of 3 treatments is recommended.

ESPA BODY WRAPS  
60 MINS £60

The body wrap is a tailor-made experience designed to comfortably raise the temperature and induce perspiration to help eliminate toxins and increase the effects and absorption of the wrap. Following skin brushing and exfoliation, a complete body wrap of either Detoxifying Algae, Marine Mud or Skin Hydrator combined with essential oils is blended and applied to meet your specific needs. The treatment ends with a mind calming Oriental Scalp Massage during the envelopment for ultimate relaxation.



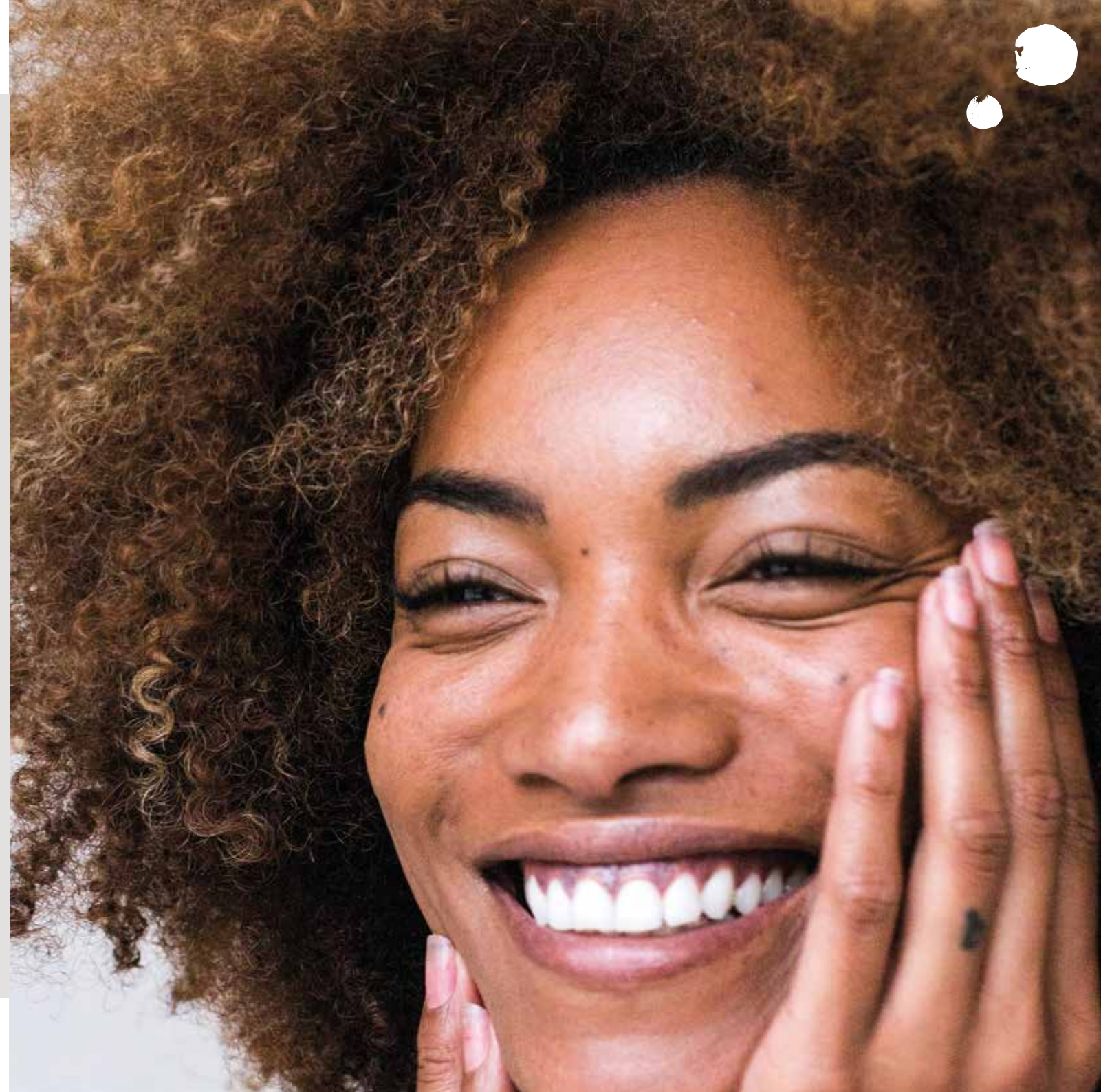
# FACIALS

## HOLISTIC BACK, FACE & SCALP TREATMENT 90 MINS £95

A truly holistic experience combining a Deep Cleansing Back Exfoliation with a powerful Back Massage using essential oils to soothe, relax and balance. This is followed by an ESPA Intensive Facial tailored to your individual needs and finishes with a therapeutic Head Massage to help clear the mind, calm the spirit and ease tension.

## ESPA INNER BEAUTY FACIAL 60 MINS £65

Our facials begin with a detailed consultation and in-depth skin analysis using technology to identify skin conditions not visible to the naked eye. This facial is for all skin types and specifically tailored to you, to include cleansing, exfoliation and a treatment specific massage and mask. Finally, skincare products are chosen for your individual needs to achieve the best possible results.







## ADVANCED FACIALS

### AGE-DEFYING FACIAL

90 MINS £72

This Age-Defying Facial with active serum and firming eye treatment helps minimise fine lines, combat the signs of ageing and visibly improves the appearance of your skin. Special age-defying massage techniques help hydrate and protect your skin with particular focus on the delicate area around the eyes, neck and lips are prone to fine lines. Skin is left feeling fresh replenished and nourished.

### REGENERATING FACIAL WITH FIRMING EYE TREATMENT

90 MINS £68

A luxurious and regenerating facial for maturing skin to help minimise lines and wrinkles around the eyes, neck, lips and jaw line. This treatment visibly improves the appearance of the skin by using a selection of age-defying products to replenish and revitalise the skin, leaving your complexion toned, radiant & rejuvenated.

### REGENERATING FIRMING EYE TREATMENT

30 MINS £35

Perfect for those who are concerned with the first signs of ageing which appear around the eye area. An effective firming and hydrating treatment using products rich in Ginkgo Biloba and Evening Primrose. This treatment also helps relieve eye-strain tension, computer headaches and contact lens wearing, whilst being a luxurious addition to any ESPA facial.



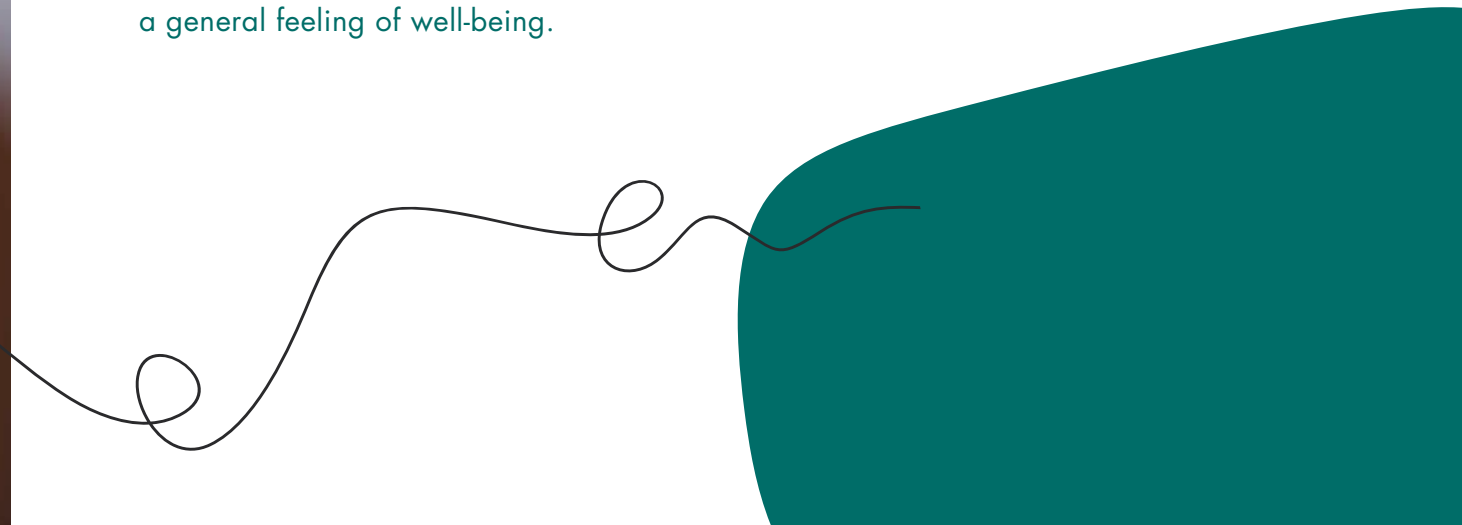
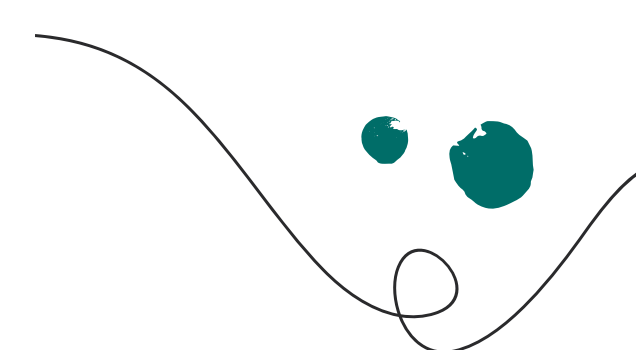
## HOLISTIC

### HOPI EAR CANDLING 30 MINS £45

This is a centuries-old treatment handed down through generations. Hopi ear candling is the ultimate relaxation treatment, helping to reduce the build-up of excess ear wax and alleviate pressure caused by headaches, colds & flu.

### REFLEXOLOGY *(Only available at some locations)* 60 MINS £55

An oriental foot massage working on the pressure points of the foot that relate to certain parts of the body. This gentle therapy encourages the body to heal itself as an enhanced but natural pace, easing tensions, circulation & fatigue and promoting a general feeling of well-being.





## FOR HIM

All of our face & body treatments are unisex but here are a few that are slightly more tailored for him...

### FOR HIM

2.5 HOURS £145

Life saving back treatment, Purifying Facial and Scalp Massage, Executive Hand or Foot Care.

### MEN'S PURIFYING FACIAL, SHOULDER & SCALP MASSAGE

60 MINS £65

City pollution, environmental stress, travel, business pressures or lack of sleep are reflected in dull, lifeless skin. This relaxing facial works at a deep molecular level to purify, balance & hydrate the skin leaving you feeling de-stressed and renewed.

### LIFE SAVING BACK TREATMENT

45 MINS £60

A stress relieving back treatment with deep cleansing, body brushing and exfoliation to help stimulate circulation and cell renewal, followed by a luxurious aromatherapy massage and body mask using individually chosen essential oils combined with marine mud.

### HOLISTIC BACK, FACE & SCALP TREATMENT

90 MINS £95

A truly holistic experience combining a deep cleansing back exfoliation with a powerful back massage using essential oils to soothe, relax and balance. This is followed by an ESPA Intensive Facial tailored to your individual needs and finishes with a therapeutic head massage to help clear the mind, calm the spirit & ease tension.

### STRESS RELIEVER TOTAL HOLISTIC BODY CARE

90 MINS £95

This all-encompassing treatment commences with a full body skin brushing and exfoliation to prepare the skin, leaving it feeling soft and smooth. This is then followed by a body, face and scalp massage using a blend of essential oils chosen to suit individual requirements.

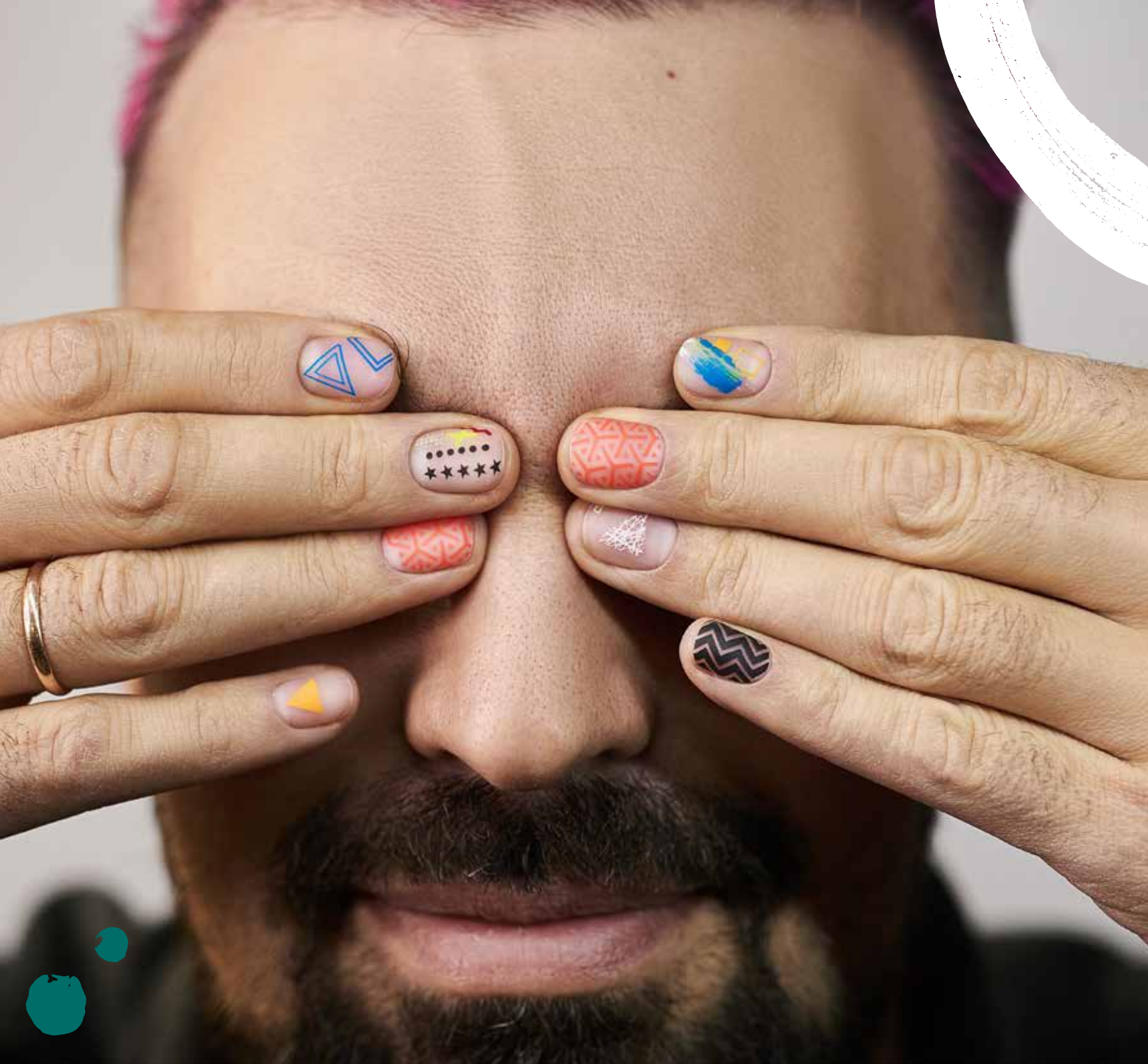
## GROOMING

CHEST WAX £22

BACK WAX £22

BACK & SHOULDER WAX £28

CHEST, BACK & SHOULDER WAX £45



## HANDS & FEET

### GENTLEMEN'S HAND CARE

30 MINS £32.50

A conditioning and softening hand treatment, nails & cuticles tided and easily pushed back complete with hand and arm massage.

### EXECUTIVE FOOT CARE

30 MINS £32.50

A foot treatment that reduces the build up of hard skin, toenails trimmed, filed and cuticles conditioned then easily pushed back, complete with foot and leg massage.

### PRESCRIPTIVE MANICURE

60 MINS £40

### DELUXE MANICURE WITH THERMAL MITTENS

90 MINS £37.50

### PEDICURE

60 MINS £45

### DELUXE SPA PEDICURE

30 MINS £50

### FILE AND POLISH ON HANDS OR FEET

30 MINS £25



A large teal shape on the left side of the page, partially overlapping a vertical strip of a floral image. A thin black line curves from the bottom of the teal shape towards the floral image.

Malmaison

malmaison.com

Full payment taken at the time of booking for all bookings  
48 hour cancellation notice (within 48 hours 100% charge is taken)

No show – 100% charge taken

Manager discretion to reschedule/refund depending on circumstances